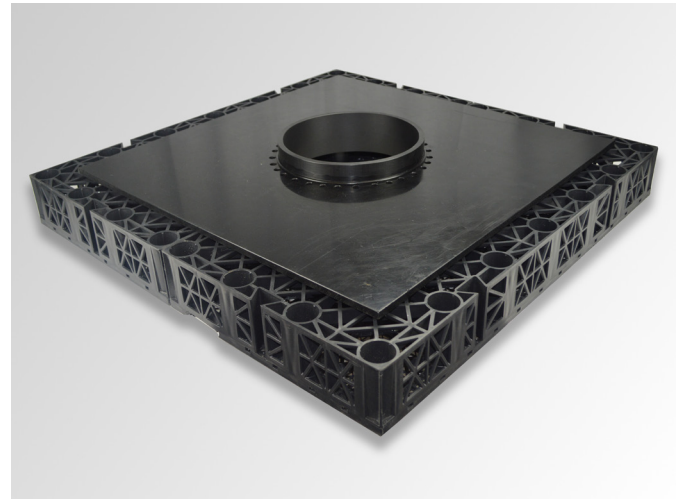


OPTIGREEN LVP

Load distribution panel

As a load distribution panel for the Optigreen system solution “Public Roof with Inspection Chamber”.
Including 0.5 m² Optigreen Water Retention Box WRB 85v with corresponding cut-out.



Material	HDPE (load distribution panel) PP (WRB 85v)
Colour	black
Dimensions	Load distribution panel: Length: 600 mm Width: 600 mm Height: 70 mm Diameter pipe: 225 mm / 209 mm (external/internal) WRB 85v: Length: 708 mm Width: 708 mm Height: 85 mm
Weight	Load distribution panel: approx. 3.5 kg WRB 85v with cut-out: approx. 4.0 kg
Quantity/ delivered unit	according to size of order
Delivery form	according to size of order by parcel shipment, or on Euro pallets by forwarding agent
Delivery weight	approx. 7.5 kg/piece

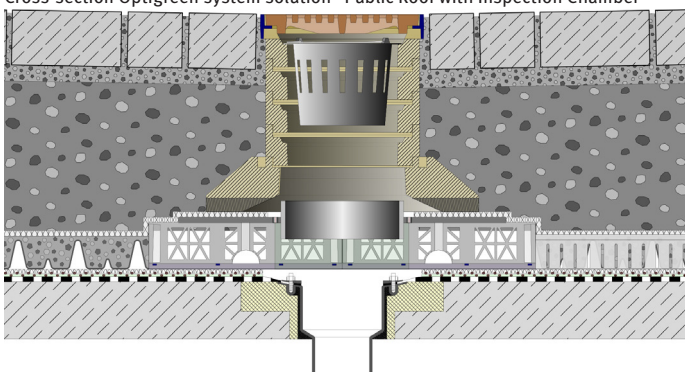
Scope of application

- For the Optigreen system solution “Public Roof with Inspection Chamber”, e.g. underneath the Optigreen Protection and Drainage Board FKD 60BU.
- Can be combined with any chambers and fixtures (inside diameter > 225 mm).
- Not suitable for vacuum drainage.

Specific properties

- 100 % HDPE
- Including 0.5 m² Optigreen Water Retention Box WRB 85v with corresponding cut-out
- Especially suited to public roofs
- Suitable for lorry traffic

Cross-section Optigreen system solution “Public Roof with Inspection Chamber”



The preceding details are guideline values established under laboratory conditions. These values are subject to a certain manufacturing tolerance. The data contained in this product information sheet represents Optigreen’s technical knowledge at the time of publication. Optigreen reserves the right to change and update details in accordance with new insights and to modify specified properties accordingly. No liability accepted for misprints.

Optigrün international AG

Am Birkenstock 15 – 19,
72505 Krauchenwies-Göggingen
Tel. +49 7576 772-0, Fax +49 7576 772-299, info@optigruen.de

Optigreen Limited (Service UK only)

Suite G5 Albany Chambers, 26 Bridge Road East
Welwyn Garden City (Herts), AL7 1HL
Phone +44 203 5899400, Fax +44 207 1171664, info@optigreen.co.uk

