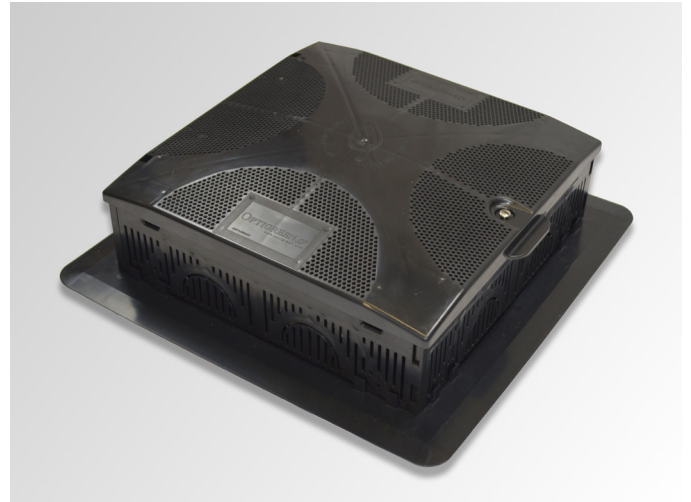


# OPTIGRÜN FSK 37

## Inspection Chamber

Inspection chamber for the revision of roof outlets.



<b>Material</b>	Recycled plastic (ABS)
<b>Colour</b>	Black
<b>Dimensions</b>	L 370 x W 370 x H 110 mm Floor area: L 470 x W 470 mm can be raised in 100 mm increments, max. height 80 cm
<b>Load capacity</b>	150 kg with cover
<b>Quantity/ delivered unit</b>	Base part, side panels and cover incl. fastening material 1 cardboard box with 6 chambers or 1 pallet with 16 cardboard boxes (96 chambers)
<b>Delivery form</b>	according to size of order by parcel shipment or by forwarding agent
<b>Pack size</b>	Cardboard box approx. L 500 x W 500 x H 350 mm Pallet approx. L1,200xW800xH1,800 mm
<b>Delivery weight</b>	approx. 2.4 kg/piece approx. 14.4 kg/cardboard box approx. 270.0 kg/pallet

### Area of use

- Inspection chamber above roof outlets of greened or gravelled roofs
- Not suitable for use in traffic areas
- For the revision of the roof outlet

### Specific properties

- Connection option for 8 Optigrün Water Conduction Channels WKK
- Opening in base part Ø 300 mm
- Inlet openings in cover and sides
- UV-resistant
- Insensitive to humic acids
- Available also with cover made of coated aluminium (Inspection Chamber Cover DSA 37I)

The preceding details are guideline values established under laboratory conditions. These values are subject to a certain manufacturing tolerance. The data contained in this product information sheet represents Optigrün's technical knowledge at the time of publication. Optigrün reserves the right to change and update details in accordance with new insights and to modify specified properties accordingly. No liability accepted for misprints.

### Optigrün international AG

Am Birkenstock 15 – 19,  
72505 Krauchenwies-Göggingen  
Tel. +49 7576 772-0, Fax +49 7576 772-299, info@optigruen.de

### Optigreen Limited (Service UK only)

Suite G5 Albany Chambers, 26 Bridge Road East  
Welwyn Garden City (Herts), AL7 1HL  
Phone +44 203 5899400, Fax +44 207 1171664, info@optigreen.co.uk

